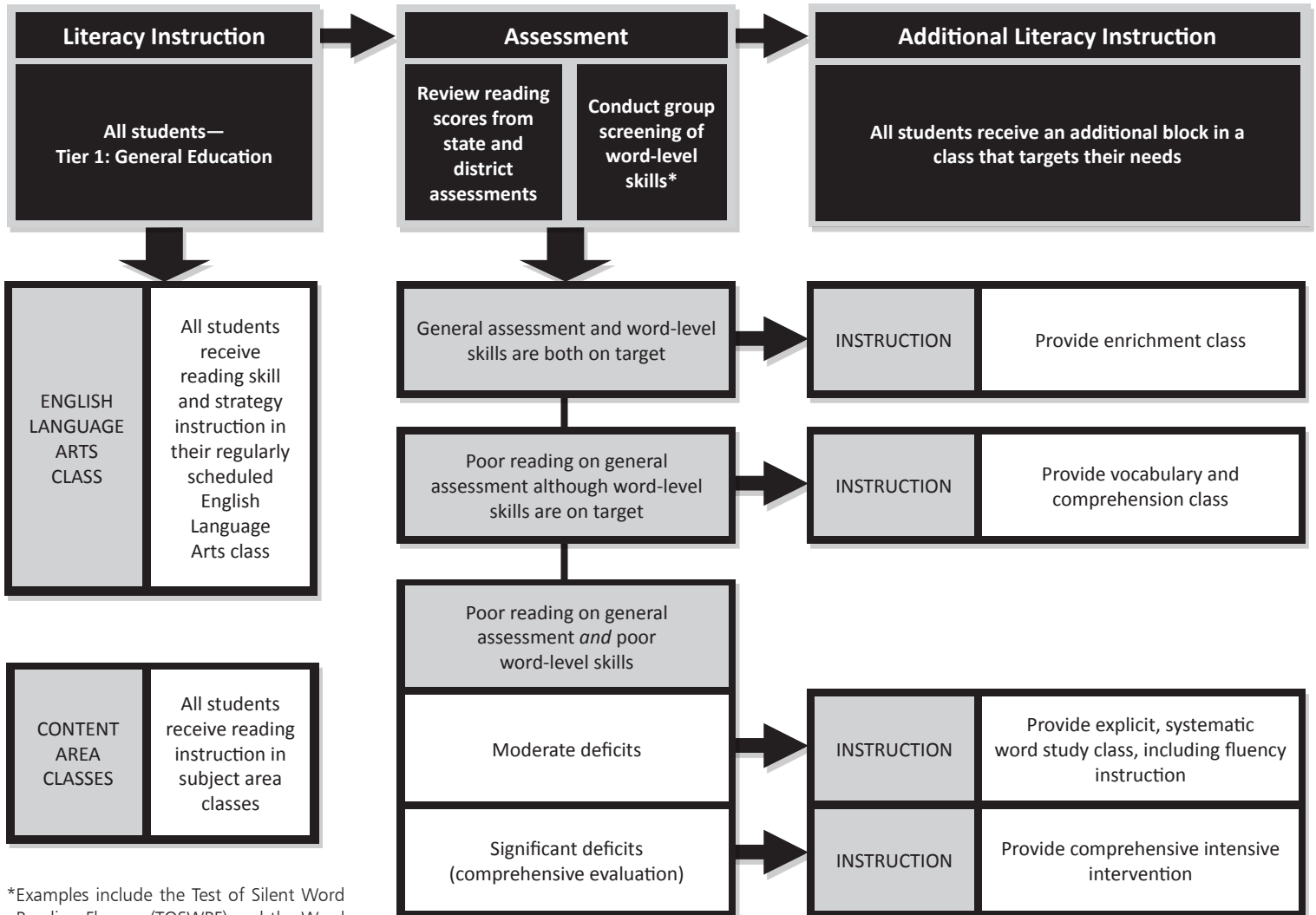


# Example of Literacy Planning Beyond Grade 3

The figure below illustrates some of the planning needed to meet the literacy needs of all students beyond grade three. The first column reinforces the importance of including reading instruction in both general English Language Arts class and subject area classes. The second column highlights various assessments to determine subskill deficits, and the third column recommends instructional practices that target those specific deficits.



\*Examples include the Test of Silent Word Reading Fluency (TOSWRF) and the Word Identification and Spelling Test (WIST)